

SCIENCE

WORKING SCIENTIFICALLY

- Ask simple questions and recognise that they can be answered in different ways
- Observe closely, using simple equipment
- Perform simple tests
- Identify and classify
- Use their observations and ideas to suggest answers to questions
- Gather and record data to help in answering questions.

EVERYDAY MATERIALS

Distinguish between an object and the material from which it is made

Identify and name a variety of everyday materials, including wood, plastic, glass, metal, water, and rock

Describe the simple physical properties of a variety of everyday materials

Compare and group together a variety of everyday materials on the basis of their simple physical properties.

SEASONAL CHANGES

- Observe changes across the four seasons
- Observe and describe weather associated with the seasons and how day length varies.

HISTORY CHRONOLOGICAL UNDERSTANDING

- Develop an awareness of the past.
- Use common words and phrases relating to the passing of time
- Identify similarities and differences between ways of life in different periods.

KNOWLEDGE AND UNDERSTANDING OF EVENTS, PEOPLE AND CHANGES

- use a wide vocabulary of everyday historical terms.
- choose and use parts of stories and other sources to show that they know and understand key features of events.

HISTORICAL INTERPRETATION

- identify some of the ways in which the past is represented.

CHANGES WITHIN LIVING MEMORY

SIGNIFICANT HISTORICAL EVENTS, PEOPLE AND PLACES IN OWN LOCALITY.



Year 1 Spring Term



GEOGRAPHY

GEOGRAPHICAL SKILLS AND FIELDWORK

- use simple fieldwork and observational skills to study the geography of their school and its grounds and the key human and physical features of its surrounding environment
- use simple compass directions (North, South, East and West) and locational and directional language [for example, near and far; left and right], to describe the location of features and routes on a map.
- use aerial photographs and plan perspectives to recognise landmarks and basic human and physical features; devise a simple map; and use and construct basic symbols in a key.

HUMAN AND PHYSICAL GEOGRAPHY

Identify seasonal and daily weather patterns in the United Kingdom and the location of hot and cold areas of the world – North Pole, South Pole

DESIGN AND TECHNOLOGY

Cooking and nutrition- Fruit Kebabs

- use the basic principles of a healthy and varied diet to prepare dishes
- understand where food comes from

ART & DESIGN

DRAWING (termly)

Become proficient in drawing

Use drawing to develop and share their ideas, experiences and imagination

PAINTING (termly)

Become proficient in painting

Use painting to develop and share their ideas, experiences and imagination

Useful Websites

BBC Weather

<http://www.bbc.co.uk/weather>

<https://www.metoffice.gov.uk/about-us/contact/open-days>

<https://www.3dgeography-pictures.co.uk/weather-awe-and-wonder>

<https://worldweather.wmo.int/en/home.html>

Newsround

<http://news.bbc.co.uk/cbbcnews/hi/world/default.stm>

Primary Homework Help

<https://www.theschoolrun.com/homework-help/history-toys>

<https://www.theschoolrun.com/homework-help/weather>

BBC Bitesize:

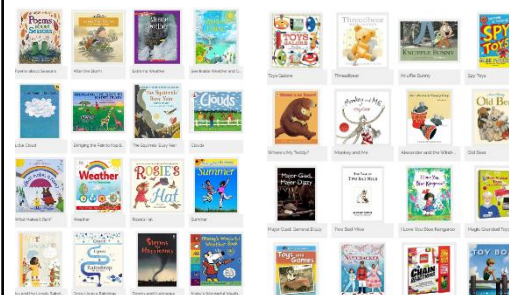
<https://www.bbc.co.uk/bitesize/topics/zndc96f/articles/zp4sydm>

<https://www.bbc.co.uk/bitesize/topics/zj3nf82/articles/z8x7m39>

National Geographic Kids:

<https://www.nationalgeographic.com/>

Recommended Reads



PE

GAMES

- Parachute games

GYM

- Rocking and rolling

PSHE

- Health and Wellbeing

RE

- Who is a Christian and what do they believe?

Mandarin